

## Info

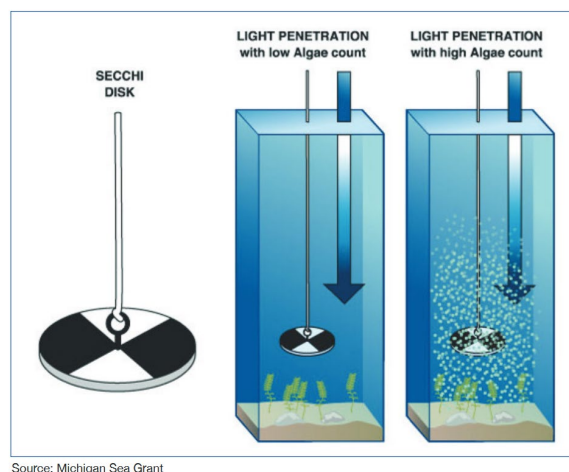
## Sensor list

Type	Parameters	Manufacturer	Reseller	Model	S/N
Secchi disk	Secchi depth	VWR	VWR	20cm	NA

<https://ch.vwr.com/store/product/fr/598894/disque-secchi>

## Data set list

- LéXPLORE Secchi Depth, <https://www.datalakes-eawag.ch/datadetail/851>

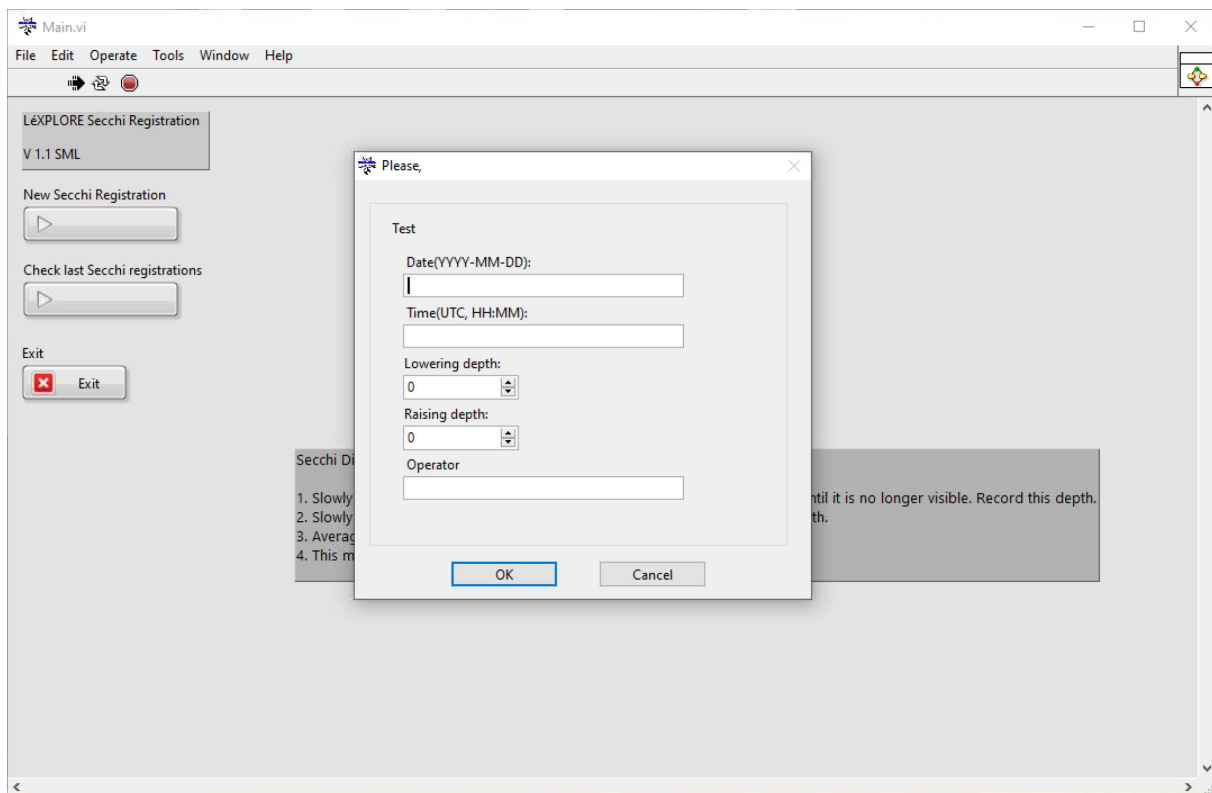


## Sampling and Logging Procedure:

## Sampling:

- STEP 1  
Slowly lower the Secchi disk into the water on the shady (North) side of LéXPLORE (ideally from the boat or the zodiac) until it is no longer visible. Notice where the water's surface intersects the marked line and record this depth.
- STEP 2  
Slowly rise the disk until it becomes visible once again. Record the depth (where the water's surface intersects the marked line).
- Average the depths from Step 1 and 2 to get the Secchi depth (averaged automatically in the logging software).
- This may be repeated for a measurement of precision.

## Logging:



- On the main computer on LéXPLORE, open the Secchi logging program (on main desktop).
- Click on „New Secchi Registration“ and fill the form. Enter falling and raising depth in meters (m).
- Enter the date YYYY-MM-DD, and time in UTC HH:MM
- Enter the name of the operator

**Note:** that the LéXPLORE computer shows time in UTC.

